



HARBOR ACADEMY

Harbor Patrol and Maintenance

Thursday, May 9, 2019



HARBOR
ACADEMY

Channel Islands Harbor



HARBOR PATROL





Harbor Patrol

- 24 hour operation, 7 days a week, 365 days a year
- 13 Patrol Officers, 2 Harbor Sergeants, 1 Harbor Captain
- All positions have – Hazwoper training, PC 832 certified

US Coast Guard Captain's License:



State Certified Emergency Medical Technicians:



- Able to provide basic life support with the use of a defibrillator





HARBOR
ACADEMY

Harbor Patrol Fleet

- 7 rescue vessels
 - One 22' Boston Whaler
 - Four 21' Boston Whalers
 - One 27' rigid hull inflatable
 - One 39' fire/rescue vessel manufactured by Sea Ark





HARBOR
ACADEMY

Main Objective

- Main objective is RESCUE, followed by:
 - PUBLIC BOATING EDUCATION
 - PUBLIC SAFETY
 - LAW ENFORCEMENT





HARBOR
ACADEMY

Area of Responsibility

- Primary area of responsibility is all inland waterways of the Channel Islands Harbor
- Open State Waters - 1 mile to the North and 1 mile to the South
- One mile seaward of the detached breakwater



We will respond out of our area
for life-threatening emergencies



HARBOR
ACADEMY

Services

- Harbor Patrol is first-in emergency services for all aquatic rescues within the area of responsibility
- These services include but are not limited to:
 - Medical Emergencies
 - Basic Life Support
 - On-water Firefighting
 - Removal of Hazards to Navigation
 - Pollution Response
 - Vessels in Distress (sinking, aground, near surf, and adrift)
 - Radio Watch
 - Float Plans



HARBOR
ACADEMY

Operations

- Operate two County owned marinas – Commercial Fishing Marina and Small Boat Marina
- Operate Fisherman's Wharf Hoist and JCS docks north of CISCO's
- Manage the live aboard program and provide live aboard inspections
- Issue all commercial and special activity permits
- Weather reporting and display weather advisories
- Handling of marine mammals and birds (live and dead)
- Control lost or abandoned property
- Handle citizen complaints
- Navigational aids - note discrepancies
- Issue guest slips for cruising boaters
- Parking enforcement



HARBOR
ACADEMY

Lifeguard Program

SEASONAL LIFEGUARDS -

- Summer support for our seasonal lifeguards on Silverstrand, Hollywood Beach and Harbor beaches
- Run Junior Lifeguard program





HARBOR
ACADEMY

Other Agency Partners

- Ventura County Fire Department
- Ventura County Sheriff's Department
- Oxnard Fire Department
- Oxnard Police Department
- U.S. Coast Guard
- CA Fish and Wildlife
- Homeland Security





HARBOR
ACADEMY

Maintenance Department Responsibilities

Responsibilities:

- Conduct routine inspections of harbor facilities and equipment
- Perform preventative maintenance
- Handle basic and high level repairs and maintenance
- Repair machines, equipment, or structures as necessary



HARBOR
ACADEMY

Skilled Professionals

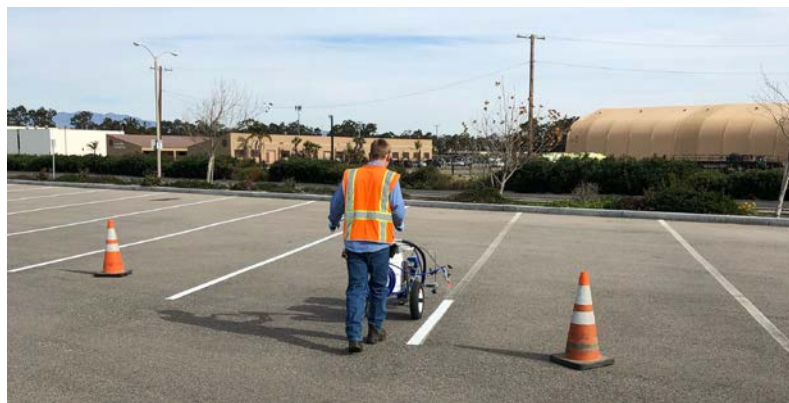
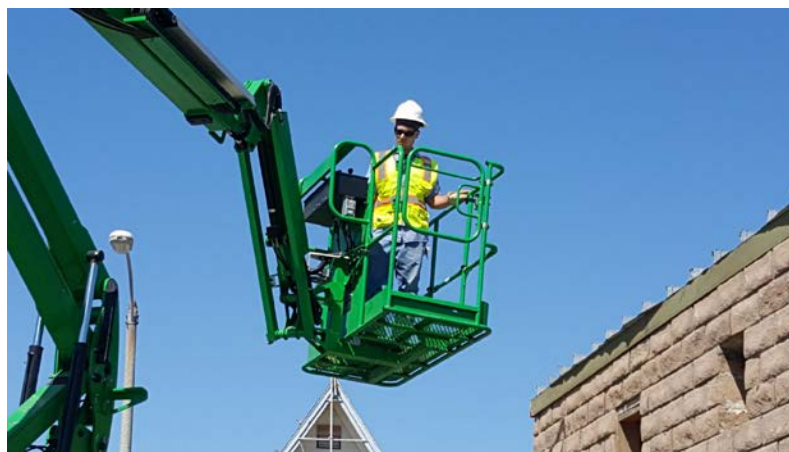
Ability to Perform:

- Electrical - Parking lot Lights, ballasts, bulbs, dock wiring, building wiring
- Welding
- Concrete Work
- Tile Work
- Brick Work
- Framing
- Metal Fabrication
- Plumbing
- Irrigation
- Tractor Operation
- Beach Grooming
- Painting
- Landscaping - Tree trimming, Landscape planting and maintenance
- Asphalt Repair
- Parking Lot Striping
- Dock Construction and Maintenance



HARBOR
ACADEMY

Maintenance Special Projects





Beach Maintenance and Grooming

- The **Barber surf rake** is used on all harbor maintained beaches a minimum of once a week
 - It is a conveyer type system which sifts debris from beaches as well as leveling
 - Grooms beach for a fresh, clean appearance
- Trash service for both Hollywood and Silverstrand beaches
- Large debris such as logs are disposed of as well as other forms of debris such as fire pits and broken glass



Seasonal installation of Lifeguard Towers and year-round maintenance



Clearing of easements



HARBOR
ACADEMY

Post Holiday & Event Clean-up





HARBOR
ACADEMY

Landscaping

- Tree trimming throughout the Harbor - both power and hand saws
- Weed abatement, new plantings and upkeep of common areas
- Maintenance and upkeep of irrigation systems





HARBOR
ACADEMY

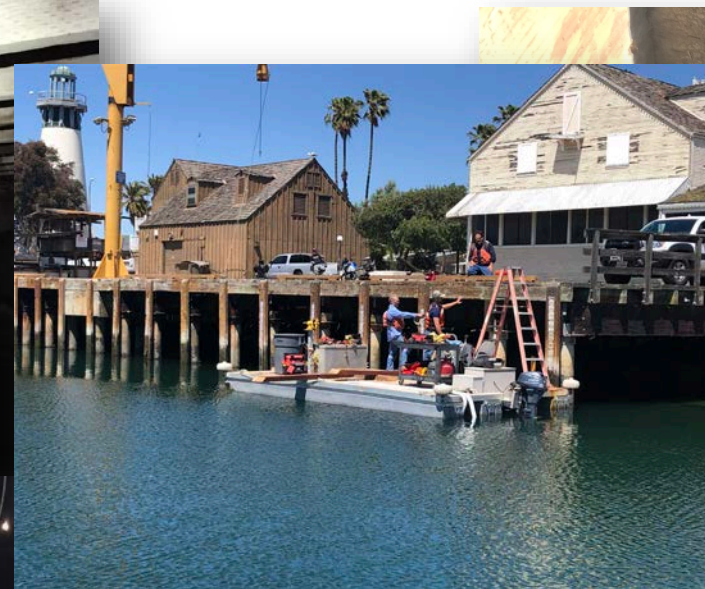
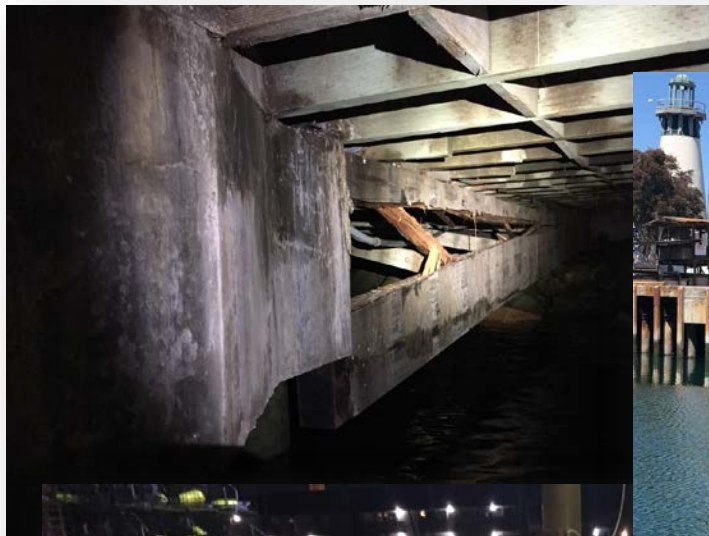
Emergency Repairs: -electrical -concrete -welding





HARBOR
ACADEMY

Emergency Repairs



Structural Damage at
Fisherman's Wharf



HARBOR
ACADEMY

Tractor Operation/ Barge Navigation



HARBOR PATROL IN OXNARD WATERWAYS





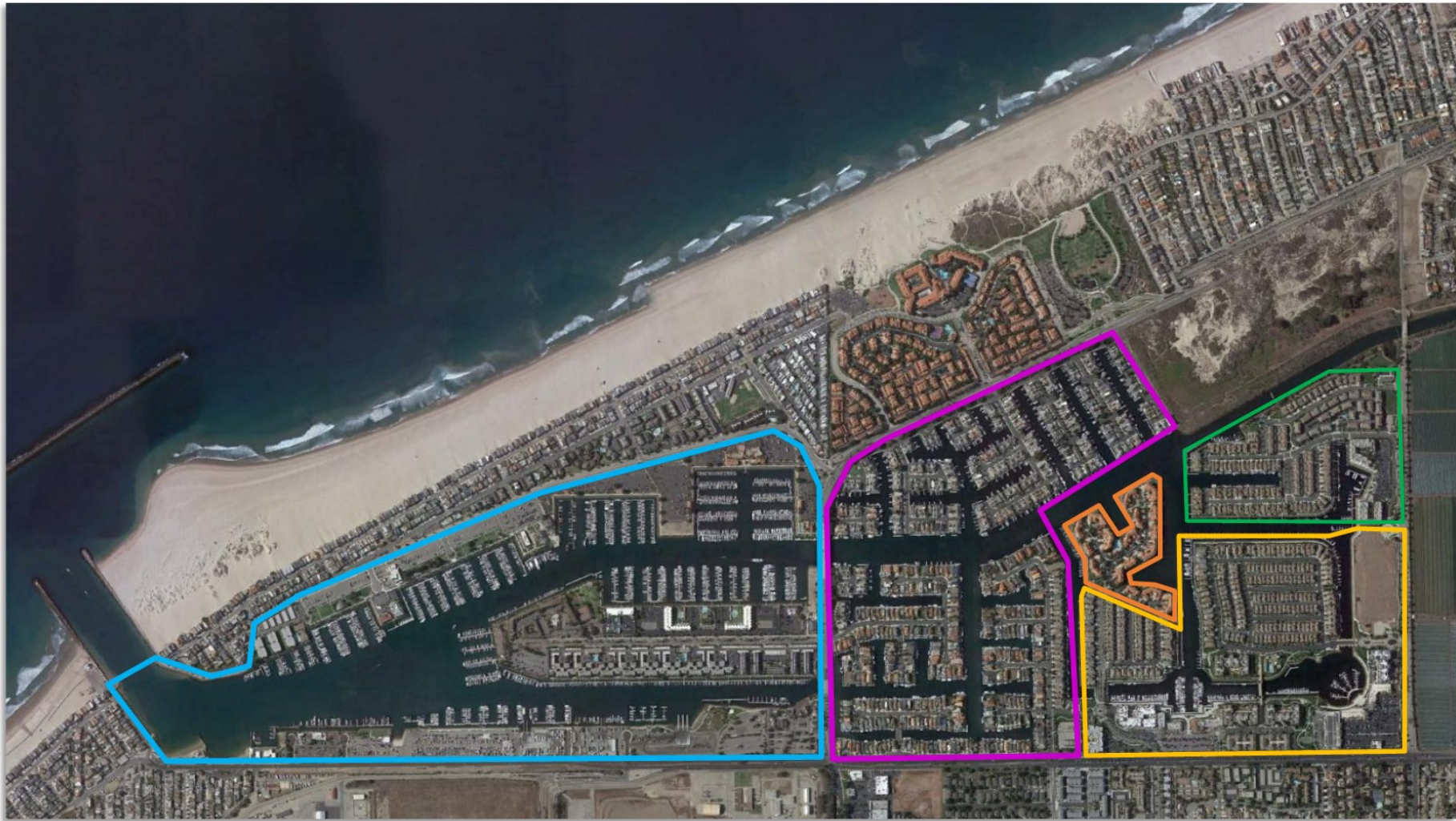
HARBOR
ACADEMY

History

Mandalay Bay-1963 Annexation Agreement- Amended in 1976

Westport- 2000 Memorandum of Understanding (MOU)

Seabridge- 2002 MOU



CHANNEL ISLANDS HARBOR

SEABRIDGE

MANDALAY BAY

WESTPORT

HARBOUR ISLAND



Harbor Patrol Budget

Staff Costs	\$2,680,000
Non-staff Operating Costs	<u>\$1,327,400</u>
Total Direct Costs	\$4,007,400
Overhead (20%)	<u>\$ 801,480</u>
TOTAL COSTS	\$4,808,880



Total Acreage

Channel Islands Harbor	170 acres (55%)
Mandalay Bay	76 acres
Seabridge	33 acres
Westport	18 acres
Harbor Island	<u>12 acres</u>
TOTAL	309 acres



HARBOR
ACADEMY

Allocation of Charges by Area

- County Channel Islands Harbor \$ 2,644,884 (55%)
- Oxnard Waterways \$ 2,163,996 (45%)



Allocation of Charges by Staff Estimated Effort Level

- County Channel Islands Harbor \$ 3,221,950 (67%)
- Oxnard Waterways \$ 1,586,930 (33%)



HARBOR
ACADEMY

Proposed Allocation of Charges

- County Channel Islands Harbor \$ 3,608,880 (75%)
- Oxnard Waterways \$ 1,200,000 (25%)



Oxnard Waterways- Allocation of Harbor Patrol Costs

TOTAL HARBOR COSTS:

\$1,200,000

COST PER RESIDENCE/PER MONTH:

\$53.00

